



WESTKEN

THE WEST KENNETT CORPORATION

Design & manufacture of special purpose automated spot welding equipment, Seam welders, Projection welders, Spot welders, Butt welders. Manufacturers of a full range of spot welding tips. Suppliers of M.I.G & T.I.G welding Equipment, for the Automotive & General Engineering industries.

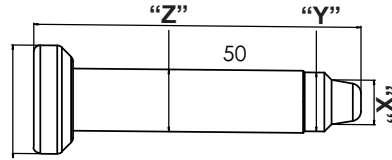
www.westken.co.za

190 Van Eden Crescent Rosslyn, Pretoria, South Africa +2712 541 6065

sales@westken.co.za | admin@westken.co.za | tech@westken.co.za

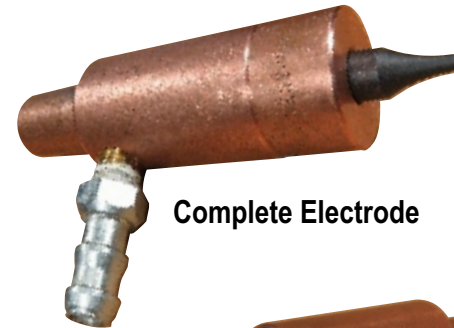
NCP104

Nut Centralizing Pin

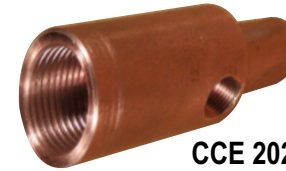


	Part Number	Nut size	step	shank dia
		"X"	"Y"	"Z"
1	NCP104-0606-2	M6 nut	6,2 step	8mmdia
2	NCP104-0606-5	M6 nut	6,5 step	8mmdia
3	NCP104-0607-0	M6 nut	7.0 step	8mmdia
4	NCP104-0607-5	M6 nut	7.5 step	8mmdia
5	NCP104-0608-0	M6 nut	8.0 step	8mmdia
6	NCP104-0608-5	M6 nut	8.5 step	9.5mmdia
7	NCP104-0609-0	M6 nut	9.0 step	9.5mmdia
8	NCP104-0609-5	M6 nut	9.5 step	9.5mmdia
9	NCP104-0610-0	M6 nut	10.0 step	10.5mmdia
10	NCP104-0610-5	M6 nut	10.5 step	10.5mmdia
11	NCP104-0808-0	M8 nut	8.0 step	9.5mmdia
12	NCP104-0808-5	M8 nut	8.5 step	9.5mmdia
13	NCP104-0809-0	M8 nut	9.0 step	9.5mmdia
14	NCP104-0809-5	M8 nut	9.5 step	9.5mmdia
15	NCP104-0810-0	M8 nut	10.0 step	12.5mmdia
16	NCP104-0810-5	M8 nut	10.5 step	12.5mmdia
17	NCP104-0811-0	M8 nut	11.0 step	12.5mmdia
18	NCP104-0811-5	M8 nut	11.5 step	12.5mmdia
19	NCP104-0812-0	M8 nut	12.0 step	12.5mmdia
20	NCP104-0812-5	M8 nut	12.5 step	12.5mmdia
21	NCP104-1010-5	M10 nut	10.5 step	12.5mmdia
22	NCP104-1011-0	M10 nut	11.0 step	12.5mmdia
23	NCP104-1011-5	M10 nut	11.5 step	12.5mmdia
24	NCP104-1012-0	M10 nut	12.0 step	12.5mmdia
25	NCP104-1012-5	M10 nut	12.5 step	12.5mmdia
26	NCP104-1212-5	M12 Nut	12.5 step	12.5mmdia

CCE 200



Complete Electrode



CCE 202 Body



CCE 201 Screw cap



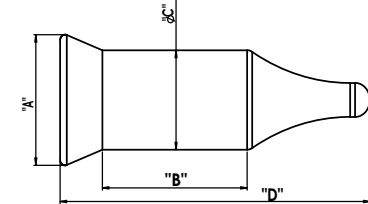
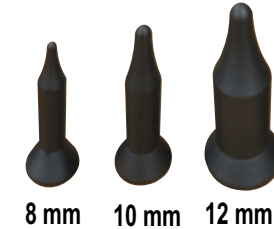
CCE-207 Stud Electrode



Ejector Spring
12Dia x 30mm

CCP 204

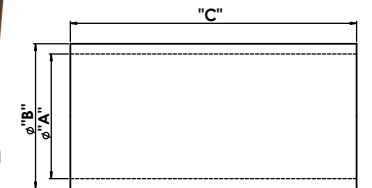
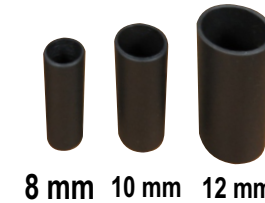
Coated Centralising Pins



CCP-203 DIE PIN	"A"	"B"	"C"	"D"
M4	12	15	4.8	29
M5	12	15	5.8	30
M6	12	15	6.8	31.5
M8	12	15	8.8	31.5
M10	16	15	10.8	34.5
M12	16	15	12.8	34.5

CCB 204

Coated Centerlised Bushes



CCB-204	"A"	B"	"C"
M6	6.2	8.2	30
M8	8.2	10.2	30
M10	10.2	12.2	30
M12	12.2	14.2	30